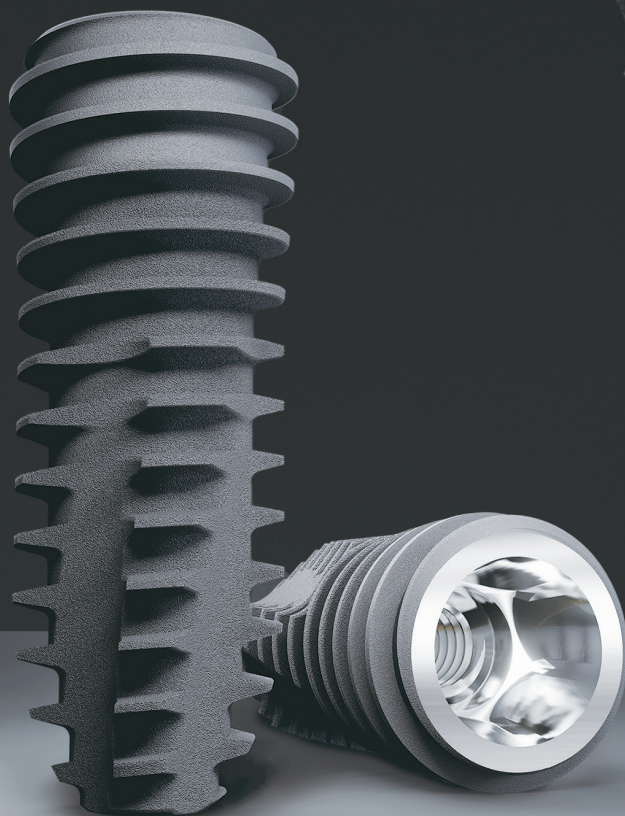


UFIII Implant

Stable Initial Stability



Enhanced Initial Stability with Specialized Design for Soft Bone



Powerful Design for Soft Bone

Enhanced stability and self-tapping function through overall tapered shape and larger cutting edge design.



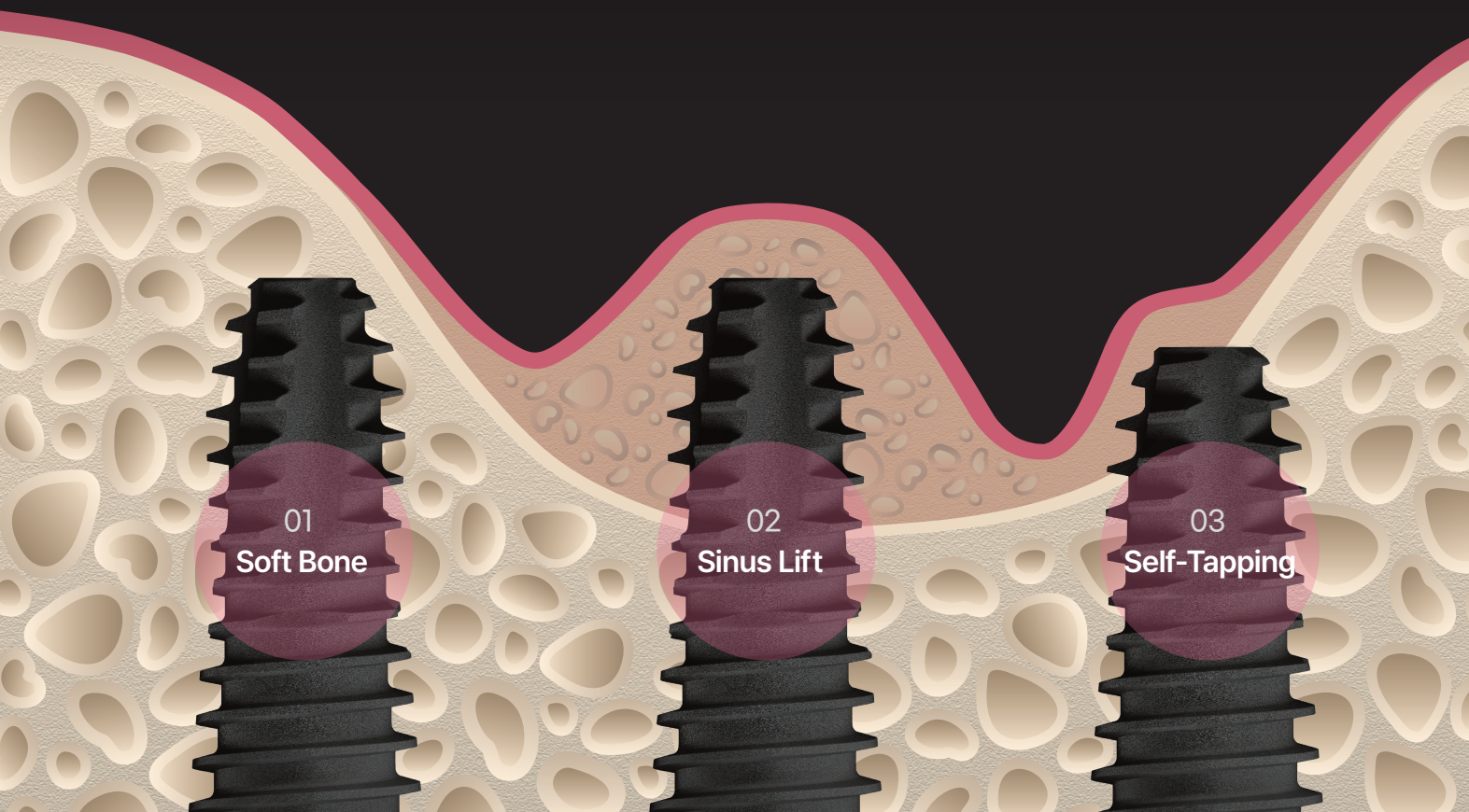
Solving Various Indications

Maxillary sinus, immediate extraction/placement, edentulism, and more.



Shortened Drill Protocol

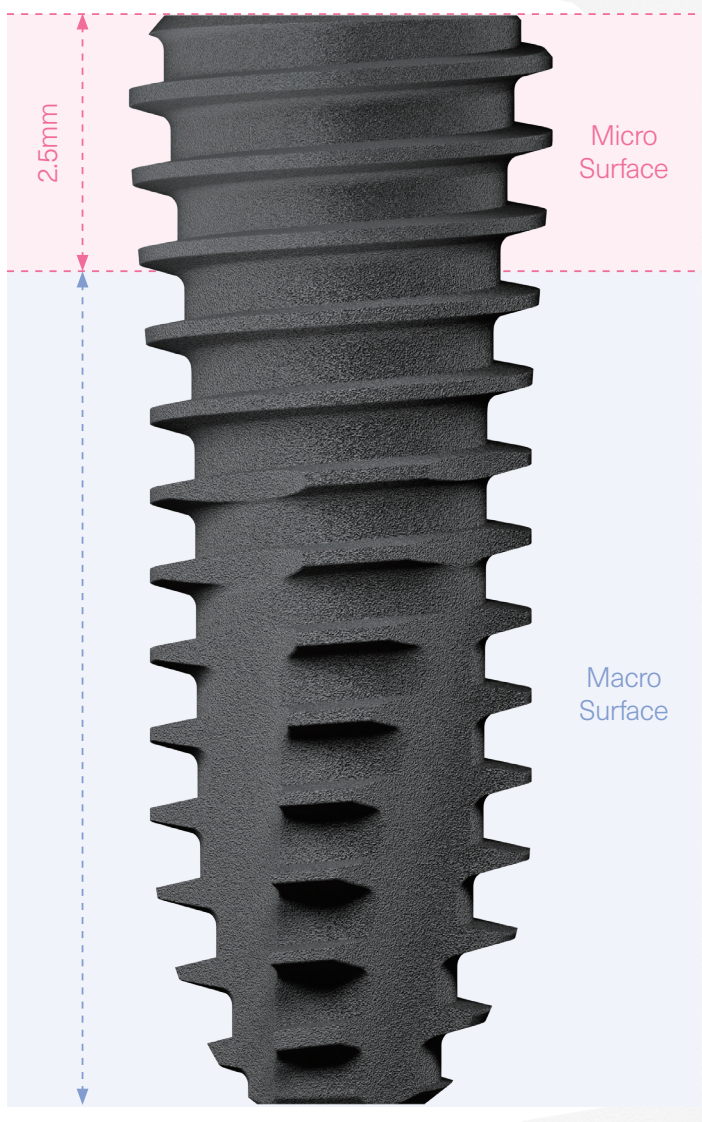
Reduced drilling steps up to 4 stages based on diameter in soft bone, easy self-tapping even during under-drilling.



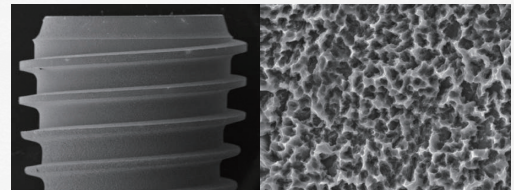
UFIII Implant Surface Treatment

Hybrid Type SLA Implant(HSA)

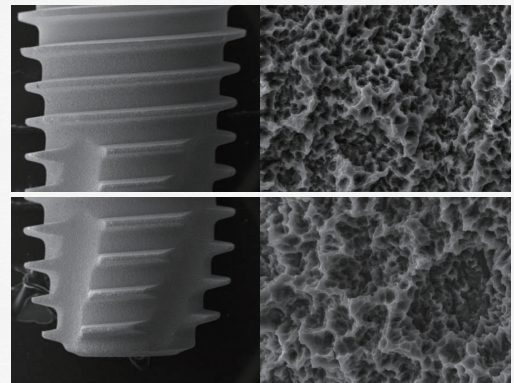
The upper part features a fine roughness to prevent peri-implantitis, while the body and apex areas employ the most suitable surface roughness for osseointegration.



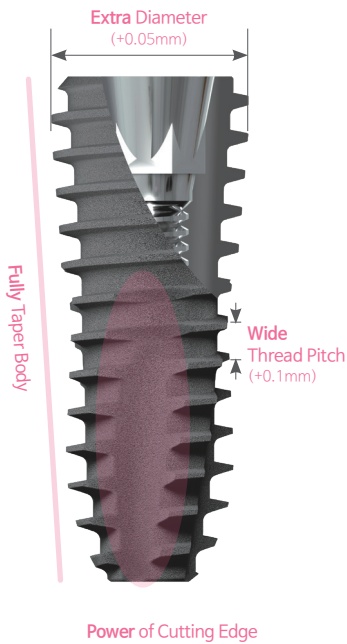
• Upper Body



• Lower Body & Apex



Fixture Design Features



01 Tapered Body & Powerful Cutting Edge

- With an overall tapered design, it provides excellent stability, and its long and sharp edge shape enables easy self-tapping.

02 Wide Thread Pitch

- Designed with thread pitch and depth to maximize the BIC(Bone-to-Implant Contact) effect.

03 Extra Diameter

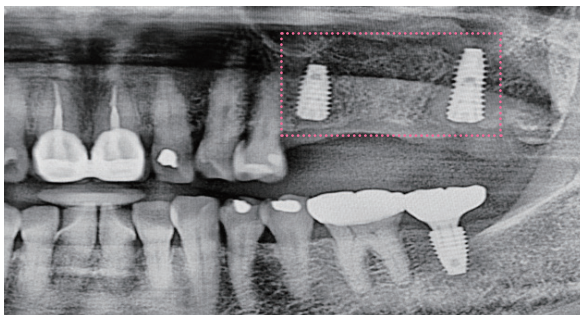
- Ensures stable fixation even in cases of soft bone and maxillary sinus involvement.

04 Open Thread

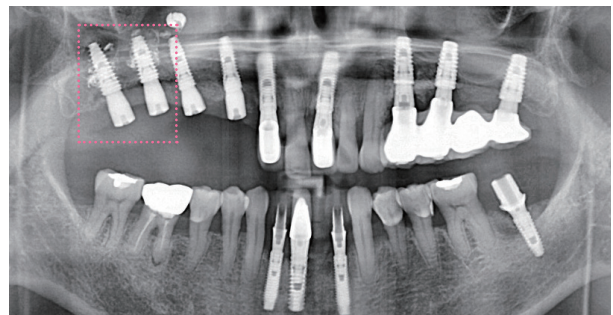
- Reduces resistance during implant placement, allowing for easy adjustment of implant depth.

UFIII Implant Clinical Case

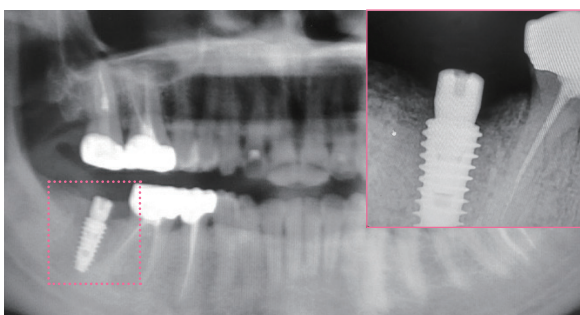
01. Maxilla Soft Bone Case



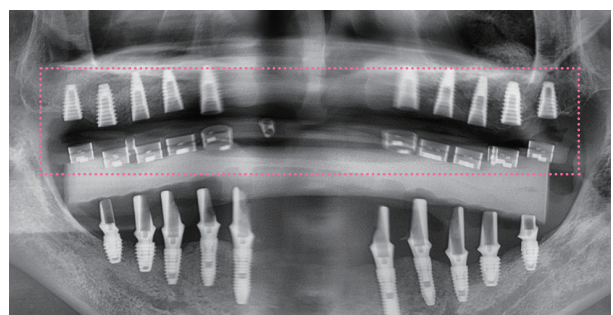
02. Maxilla Soft Bone Case



03. Mandibular immediate extraction / placement case



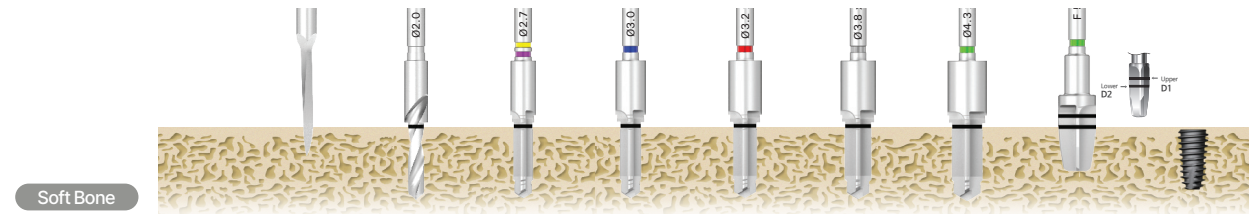
04. Maxillary Edentulous Case



Protocol comparison

Flap Surgery

3 steps shorter

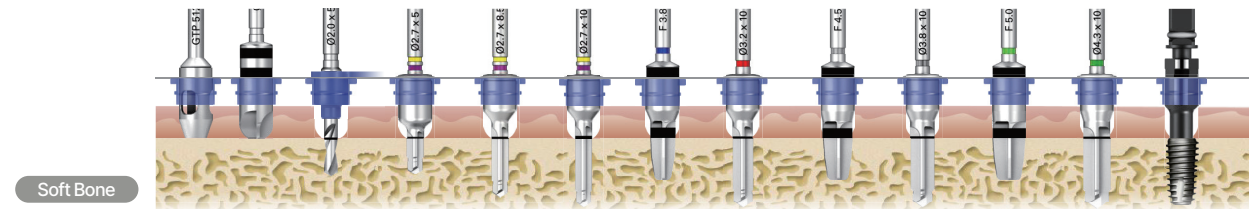


Bone Density	Fixture	Drill								Ø5.0 x 10mm
		Starter	Ø2.0	Ø2.7	Ø3.0	Ø3.2	Ø3.8	Ø4.3	Profile	
D4	UFII	●	●	●	●	●	●			
	UFIII	●	●	●						

3 steps shorter

Flapless Surgery

4 steps shorter



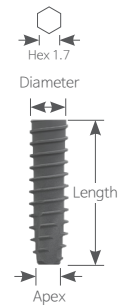
Bone Density	Fixture	Drill										Ø5.0 x 10mm
		Ø2.0 x 5mm	Ø2.7 x 5mm	Ø2.7 x 8.5mm	Ø2.7 x 10mm	F3.8 x Profile	Ø3.2 x 10mm	F4.5 x Profile	Ø3.8 x 10mm	F5.0 x Profile	Ø4.3 x 10mm	
D4	UFII	●	●	●	●	●	●	●	●			
	UFIII	●	●	●	●							

4 steps shorter

Order Code

UFIII Narrow Fixture

- HSA / Packing Unit : Fixture | Order code : UFIIN 0000SF (ex : UFIIN 3008SF)
 Fixture + Cover Screw | Order code : UFIIN 0000S (ex : UFIIN 3008S)
- UV Active / Packing Unit : Fixture | Order code : UFIIN 0000UV3 (ex : UFIIN 3008UV3)



N D Ø3.0 Hex 1.7 Apex Ø1.6

Unit mm | Scale 1 : 1.2

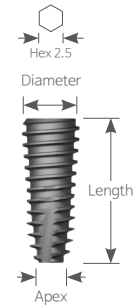
Length	8.5	10	11.5	13	15
HSA	UFIIN 3008SF	UFIIN 3010SF	UFIIN 3011SF	UFIIN 3013SF	UFIIN 3015SF
UV Active	UFIIN 3008UV3	UFIIN 3010UV3	UFIIN 3011UV3	UFIIN 3013UV3	-

N D Ø3.3 Hex 1.7 Apex Ø1.7

Length	8.5	10	11.5	13	15
HSA	UFIIN 3308SF	UFIIN 3310SF	UFIIN 3311SF	UFIIN 3313SF	UFIIN 3315SF
UV Active	UFIIN 3308UV3	UFIIN 3310UV3	UFIIN 3311UV3	UFIIN 3313UV3	-






UFIII Regular Fixture

- HSA / Packing Unit : Fixture | Order code : UFIII 0000SF (ex : UFIII 3808SF)
Fixture + Cover Screw | Order code : UFIII 0000S (ex : UFIII 3808S)
- UV Active / Packing Unit : Fixture | Order code : UFIII 0000UV3 (ex : UFIII 3808UV3)








R D Ø3.8 Hex 2.5 Apex Ø1.4






Unit mm | Scale 1 : 1.2

Length	7	8.5	10	11.5	13
					
HSA	-	UFIII 3808SF	UFIII 3810SF	UFIII 3811SF	UFIII 3813SF
UV Active	-	UFIII 3808UV3	UFIII 3810UV3	UFIII 3811UV3	UFIII 3813UV3






R D Ø4.0 Hex 2.5 Apex Ø1.6

Length	7	8.5	10	11.5	13
					
HSA	UFIII 4007SF	UFIII 4008SF	UFIII 4010SF	UFIII 4011SF	UFIII 4013SF
UV Active	UFIII 4007UV3	UFIII 4008UV3	UFIII 4010UV3	UFIII 4011UV3	UFIII 4013UV3

R D Ø4.5 Hex 2.5 Apex Ø1.6

Length	7	8.5	10	11.5	13
					
HSA	UFIII 4507SF	UFIII 4508SF	UFIII 4510SF	UFIII 4511SF	UFIII 4513SF
UV Active	UFIII 4507UV3	UFIII 4508UV3	UFIII 4510UV3	UFIII 4511UV3	UFIII 4513UV3

R D Ø5.0 Hex 2.5 Apex Ø2.0

Length	7	8.5	10	11.5	13
					
HSA	UFIII 5007SF	UFIII 5008SF	UFIII 5010SF	UFIII 5011SF	UFIII 5013SF
UV Active	UFIII 5007UV3	UFIII 5008UV3	UFIII 5010UV3	UFIII 5011UV3	UFIII 5013UV3

DIO IMPLANT
www.dioimplant.com



+9821 42 8930 www.diopars.com info@diopars.com
1&4 Floors, No. 231, Citizen Bldg., Motahari St., Tehran, Iran